



TIMAP Polyclonal Antibody

Catalog No	YP-Ab-04244
Isotype	IgG
Reactivity	Human;Mouse
Applications	WB;IHC
Gene Name	PPP1R16B
Protein Name	Protein phosphatase 1 regulatory inhibitor subunit 16B
Immunogen	The antiserum was produced against synthesized peptide derived from human PPP1R16B. AA range:364-413
Specificity	TIMAP Polyclonal Antibody detects endogenous levels of TIMAP protein.
Formulation	Liquid in PBS containing 50% glycerol, 0.5% BSA and 0.02% sodium azide.
Source	Polyclonal, Rabbit,IgG
Purification	The antibody was affinity-purified from rabbit antiserum by affinity-chromatography using epitope-specific immunogen.
Dilution	WB 1:500-2000;IHC-p 1:50-300
Concentration	1 mg/ml
Purity	≥90%
Storage Stability	-20°C/1 year
Synonyms	PPP1R16B; ANKRD4; KIAA0823; Protein phosphatase 1 regulatory inhibitor subunit 16B; Ankyrin repeat domain-containing protein 4; CAAX box protein TIMAP; TGF-beta-inhibited membrane-associated protein; hTIMAP
Observed Band	64kD
Cell Pathway	Cell membrane . Cell membrane ; Lipid-anchor . Nucleus . Cell projection . Colocalizes with RPSA/LAMR1 in the cell membrane (PubMed:16263087). Localizes to the perinuclear region (By similarity). Colocalizes with PTEN at the tip of EC projections (PubMed:25007873). .
Tissue Specificity	Brain,
Function	function:May be a downstream target for TGF-beta1 signaling cascade in endothelial cells.,induction:Inhibited by TGF-beta1.,similarity:Contains 5 ANK repeats.,subunit:Binds PP1.,tissue specificity:Highly expressed in vascular endothelium, CNS, lung, spleen, kidney and testis.,
Background	The protein encoded by this gene is membrane-associated and contains five ankyrin repeats, a protein phosphatase-1-interacting domain, and a carboxy-terminal CAAX box domain. Synthesis of the encoded protein is inhibited by transforming growth factor beta-1. The protein may bind to the membrane through its CAAX box domain and may act as a signaling molecule through interaction with protein phosphatase-1. Alternative splicing results in multiple



transcript variants encoding different isoforms that may undergo similar processing to generate mature protein. [provided by RefSeq, Sep 2015],

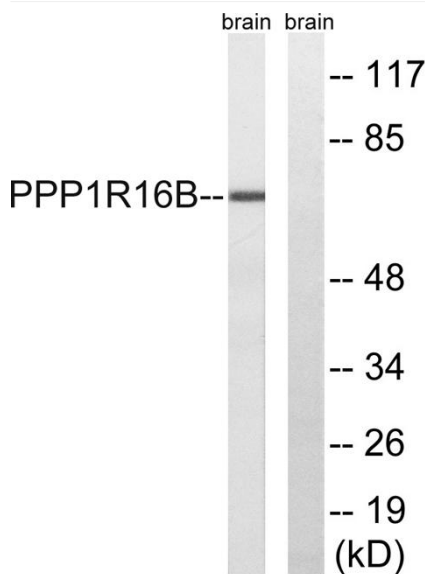
matters needing attention

Avoid repeated freezing and thawing!

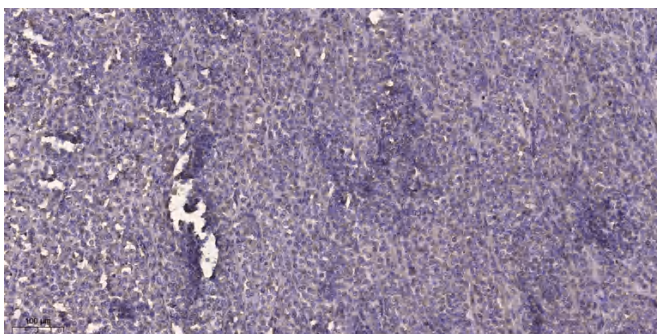
Usage suggestions

This product can be used in immunological reaction related experiments. For more information, please consult technical personnel.

Products Images



Western blot analysis of lysates from mouse brain, using PPP1R16B Antibody. The lane on the right is blocked with the synthesized peptide.



Immunohistochemical analysis of paraffin-embedded human Colon cancer. 1, Antibody was diluted at 1:200(4° overnight). 2, Tris-EDTA,pH9.0 was used for antigen retrieval. 3,Secondary antibody was diluted at 1:200(room temperature, 45min).